

QPC60 Portable Visualizer



Small in Size, Big in Features

Complete STANDALONE MP4 video and audio recording and playback with built in SD card, microphone, LCD color display and speaker!

Advanced Features

- Record/playback video in MP4 format
- Built-in microphone & speaker
- LCD color display & backlit stage
- 5MP CMOS sensor
- 48x optical quality
- Macro mode
- SD card slot
- Remote control
- Microscope adapter
- 4 Rotational Axes

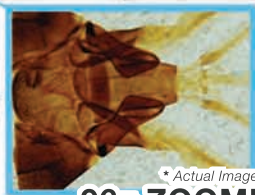


Specifications

QPC60



Imaging Features	
Image Sensor	5.0M CMOS
Output Resolution	XGA / SXGA(via USB) / 720p
Optical Zoom	3x
Smart Zoom	2x
Mechanical Zoom	8x
Total Optical Quality Zoom	48x
Digital Zoom	4x
Focus	Auto/Manual
Macro Mode	✓
Input/Output	
Video Input - VGA	1
Video Output - C-Video	1
Video Output - VGA	1
Video Output - HDMI	1
Built-in Speaker	✓
Built-in Microphone	✓
Audio Input	1 (3.5mm)
Audio Output	1 (3.5mm)
Multimedia Features	
Video Recording in MP4 with Audio	✓
On-board LCD Color Display	Light Box / Playback / Preview / GUI
Onboard Playback with Audio	✓
Built-in Speaker	✓
Built-in Microphone	✓
SD Card Media File Management	✓
Presentation Features	
Microscope Adaptor	✓
On-Board LCD Monitor	Full Color
Image Storage	SD card / Internal Storage
SD Card Storage & Playback	✓
Black & White Selection	✓
Freeze Frame	✓
Picture in Picture	✓
Slide Show Mode	✓
Mask Mode	✓
Highlight Mode	✓
Negative mode	✓
Text Enhancement	2
Graphics Enhancement	2
Camera Rotational Axis	4
Image Rotation	0°, 180°
Graphical User Interface (GUI)	9 Languages
PC Connectivity	
USB	Camera Mode / External Drive
Frame Rate	Up to 30 FPS
Connectivity	USB Image & Video Capture
OS Support	PC, Mac
Lighting	
Lights	LED
Light Intensity	Variable Diming
Light Box	2.5"
Control	
Remote Control	✓ with Laser Pointer
Shooting Area	14.2"x10.4"
Included Accessories	
AC/DC Adaptor	✓
15 Pin VGA Cable	✓
USB Cable (A - B)	✓
HDMI Cable	✓
RCA Cable	✓
Audio Mini Jack to RCA Cable	✓
Microscope Adaptor	✓
Remote Control	✓
Anti-glare Sheet	✓
Manual	✓
Product CD	✓
Others	
Kensington® Lock	✓
Weight	4.5lbs
Color	White
Power Consumption	5 VDC / 7 W
Dimensions (WxDxH) Setup	15"x7.8"x17"
Dimensions (WxDxH) Folded	15"x7.8"x3"
Dimensions (WxDxH) Base	9.75"x7.8"x1.875"



* Actual Image
96x ZOOM!
Microscope Slide View

Three 90° Lockable Workstations



46950 Magellan Drive Wixom, MI, 48393, USA
Toll Free: +1-866-990-QOMO (7666)
Phone: +1-248-960-0985
Fax : +1-248-281-1998

www.qomo.com
Sales: info@qomo.com
www.facebook.com/qomosolutions
www.twitter.com/qomohitevision