

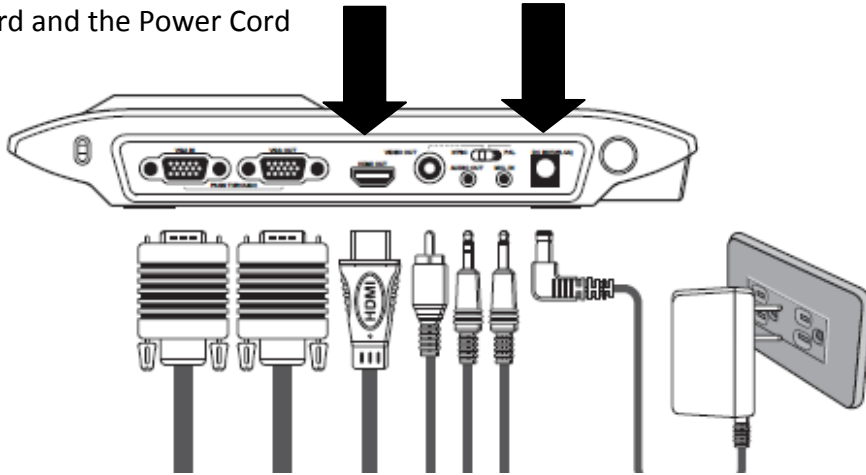
Technology Help Sheet: Getting Started with your Document Camera

Unpacking

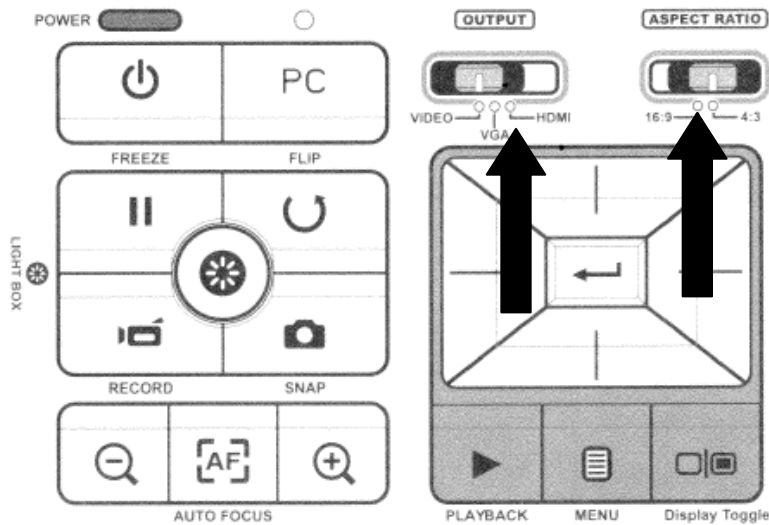
Be careful when unpacking your document camera. Never pick up your camera by its arm. Most of the cords and things are included in the little box. There is a little translucent piece that you do not want to lose.

Plugging in

To use our document camera with your projector directly, you only need to plug in: the HDMI cord and the Power Cord



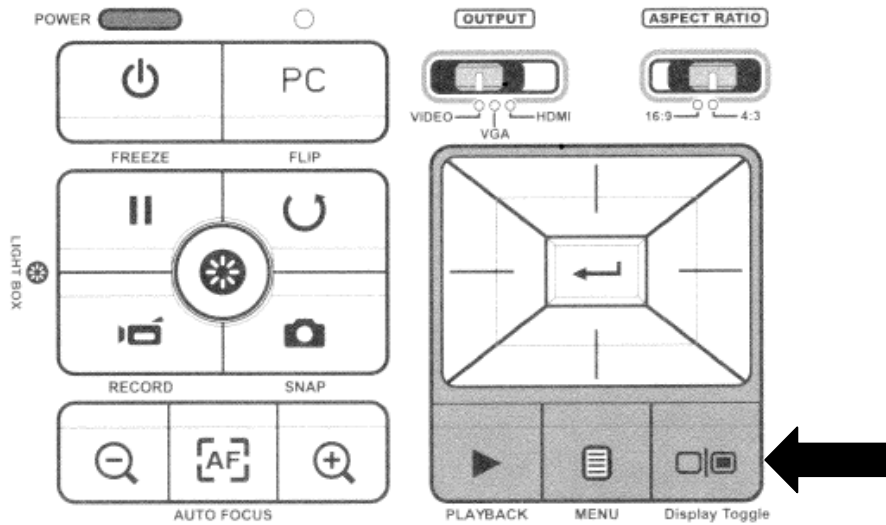
Make sure your input is set on HDMI and your aspect ratio is 16:9



Technology Help Sheet: Getting Started with your Document Camera

Getting Started

When you turn your document camera on, the image of our object will likely appear on the document camera display. To send the image to the projector instead, you need to press the "Toggle Display" button.



Other Easy to use Features

This diagram shows the same control panel as above, but with callout boxes explaining specific features. Arrows point from the callout boxes to the corresponding buttons on the panel.

- Freeze:** This keeps the image on the screen the same even if you change or move the object. (Points to the FREEZE button)
- Flip:** Sometimes it's too hard to get an object properly oriented. This flips it upside down. (Points to the FLIP button)
- Record:** This allows you to create a short video in mp4 format. (Points to the RECORD button)
- Snap:** Takes a snapshot of the display. (Points to the SNAP button)
- Zoom Out:** (Points to the magnifying glass with minus sign button)
- Autofocus:** (Points to the AF button)
- Zoom In:** (Points to the magnifying glass with plus sign button)